



**WORLD'S BEST
ALLOY BULLBARS**

East Coast Bullbars (ECB Pty Ltd)

Tel: 07 3897 5700

Fax: 07 3283 1168

ecb@ecb.com.au www.ecb.com.au

29 Snook St
Clontarf QLD 4019
Australia

Po Box 122
Margate QLD 4019
Australia

BF79SY

REPLACES: 00.00.00

REVISED: 15.01.14

Superceeds: BF75SY

FITTING INSTRUCTIONS

FORD RANGER 10/11on WINCH COMPATIBLE BIG TUBE™ BAR WITH FOG LIGHTS TO SUIT WARN XP9000 and WARN XP9500 VEHICLE FRONTAL PROTECTION SYSTEM (VFPS) FOR AIR BAG & ADR COMPLIANT VEHICLES

Check installation hardware before commencing.

NOTE: During the installation of these products, the bumper support is removed. Please ensure bumper support is given to the vehicle owner and they are aware they will require to be refitted if the product is removed. **See figure 1** for photo of items to be returned.



Figure 1 – Bumper support shown in two parts for photo

1. Lift bonnet
2. Remove three push pull clips from top cover on grille. Slide hand under cover and push centre of clip to rear to remove two clips on sides and eight clips holding front of cover. Remove cover. **CAUTION:** Excessive force will damage clips on cover. **See figure 2.**
3. Remove two push pull plastic clips from top outer corners of grille. Pull top of grille forward to allow hand room under centre air dam. Using a flat screw driver, place tip of screw driver through hole between air dam and bumper on outer corner of bumper/grille join. Gently lever clip down to release centre of clip while pulling grille forward. Release all clips on grille. **See figures 3 and 4.**
4. From behind grille remove one 10mm head bolt and one push pull plastic clip from inner lower corner of headlight and two plastic screw clips from under grille.
5. Under front of wheel arch remove four plastic screw clips and one 7mm head PK screw (per side), where bumper meets guard. Remove four 10mm head bolts from underside of bumper. Gently pull side of bumper out to release from guard clips. Remove bumper cover.
6. Remove plastic air dam from front of bumper support, four push pull plastic clips.
7. Remove two grey plastic clips from plastic air dam on rear of bumper support and two 15mm head bolts from front of under body steel guard. Loosen only the rear bolts from the under body steel guard and remove.
8. Remove bumper support, four 15mm head bolts. Return to customer for future refit should protection bar be removed.
9. Remove radiator air dams, two 8mm head bolts (per side). Retain bolts for refit at a later stage. Trim lower front from air dams to allow room for ECB steel mount. **See figures 5 and 6.** Drill holes in rear section of air dam to allow refit of air sensor.



**WORLD'S BEST
ALLOY BULLBARS**

East Coast Bullbars (ECB Pty Ltd)

Tel: 07 3897 5700

Fax: 07 3283 1168

ecb@ecb.com.au www.ecb.com.au

29 Snook St
Clontarf QLD 4019
Australia

Po Box 122
Margate QLD 4019
Australia

10. Remove lower air dams from sides of chassis rails. These are held on by a white plastic bung pushed into the chassis rail between the radiator and chassis rail. **See figure 7.** To remove, use a flat bladed screwdriver to lever away from chassis rail then push air dam rearward to allow access behind radiator. Remove air dam from front of vehicle.
11. Remove four lower bumper supports. **See figures 8 and 9.**
12. Refit radiator air dams to radiator support using original equipment 8mm head bolts. Refit air sensor
13. Remove plastic bumper supports from under headlight and guard edge, four 10mm head bolts and one 10mm head screw. Refit one 10mm head bolt into front corner of guard to headlight. **Tighten bolts.**
14. Install winch into ECB winch frame (supplied) with fairlead roller to bottom bolts. Use bolts supplied with winch to install. Do not wire control box at this point.
15. Fit ECB winch frame to front of chassis using four original equipment bolts and eight ½ x 1 ½ bolts, flat washers, spring washers and nuts (supplied) to front of chassis rails. **Tighten all bolts. See figure 10. Caution:** Winch frame and winch are heavy. A two person lift is recommended.
16. Align ECB steel mountings brackets (supplied) to slot in side of winch frame and front hole in side of chassis. Mark rear hole on side of chassis. Centre punch and drill to 10mm. Ensure hole is drilled at 90 degrees to chassis rail as a brace plate is fitted to these same bolts on the inside.
17. Enlarge outer holes to accept 48mm spacer tube. **Blow filings clear and treat all exposed metal with a rust inhibitor.**
18. Place 3/8 x 3 ½ bolts and washers (supplied) through rear holes on ECB steel mounting brackets. Over bolts place 48mm spacer tubes (supplied). Fit ECB mounting bracket to pre drilled holes in chassis rail, fitting ECB winch support bracket (supplied) on inside of chassis and flat washers, spring washers and nuts (supplied). **Finger tighten only.**
19. Attach inside of ECB winch support bracket to ECB winch frame using ½ x 1 ½ bolts, flat washers, spring washers and nuts (supplied). **See figure 11** Place head of bolt up from underside of winch frame to allow easier fitment of original equipment under body guard.
20. Align ECB steel mounting brackets to winch frame and **tighten all bolts.**
21. Attach ECB control box mount (supplied) to drivers side of ECB winch frame using two 3/8 x 1 ½ bolts, flat washers, spring washers and nuts (supplied). **See figure 12.** Fit winch control box to control box mount using nuts supplied with winch and two M6 washers (supplied). Wire winch control box as per winch manufacturers instructions.
22. Disconnect indicator and parking lights on vehicle. Install ECB quick click wiring harnesses (supplied) between disconnected harness and indicator / park lights on vehicle. Run wiring out from under lights ensuring clearance from sharp edges and moving parts.
23. Install ECB quick click wiring harness into original equipment fog light connectors. Should vehicle not have original equipment fog lights, an aftermarket wiring harness will need to be installed.
24. Attach ECB lower grille mounts (supplied) to lower mount of headlight using original equipment 10mm head bolt. **See figure 13. Finger tighten only.**



**WORLD'S BEST
ALLOY BULLBARS**

East Coast Bullbars (ECB Pty Ltd)

Tel: 07 3897 5700

Fax: 07 3283 1168

ecb@ecb.com.au www.ecb.com.au

29 Snook St
Clontarf QLD 4019

Australia

Po Box 122
Margate QLD 4019
Australia

25. Fit grille to vehicle using original equipment top clips. For lower mounts, rotate ECB lower grille mounts so outer front edge of grille. Using ECB lower grille mounts as a guide, drill 4mm guide hole through lower section of grille. Rotate ECB lower grille mounts out of way and enlarge guide holes to 8mm. Fit grille to ECB lower grille mounts using black plastic clips removed from front of bumper support. Place head to top (grille) side. Tighten all bolts. **See figure 14.**
26. Attach ECB rear guard infill's to front bumper rear mounting point on guard using original equipment 8mm head screws. Align to run level with edge of guard. **See figure 15.**
27. Attach three pieces of 6mm clip lock trim (supplied) to top of ECB protection bar, one to centre and one each side to outer wing sections of protection bar. **NOTE:** Trim off lower edge on an angle so trim will sit flush with end of protection bar. **See figures 16, 17 and 18.**
28. Attach the 650mm length of 6mm clip lock (supplied) around roller fairlead cut out in the skirt.
29. Attach ECB alloy headlight infill's (supplied) to top of protection bar using M6 x 25 bolts, spring washers and flat washers (supplied). **See figure 19. Finger tighten only**
30. Fit ECB LED indicator / park lights into protection bar as per instructions supplied with the LED indicator kit. **NOTE: Ensure park light is to outside. See figure 20.**
31. Attach ECB fog lights to protection bar. Place M6 x 20 bolts, spring washers (supplied) through light mount from inside and attach nut to top. Slide assembly into light mount in Protection bar and centralize light to hole. **TIGHTEN FIRM ONLY. See figure 21.**
32. Fit ECB protection bar to outside of ECB steel mounting brackets using ½ x 1 ½ bolts, flat washers, spring washers and nuts (supplied). **Finger tighten only.**
33. Align ECB protection bar to vehicle. **See figures 22 and 23. Tighten all bolts. Note:** Front of bar is designed to almost vertical, alignment of side is from front of guard to rear of ECB infill. Minimum distance of 12mm to guard is required due to movement between chassis and body.
34. Align ECB alloy headlight infill's with vehicle headlights and tighten. **Caution:** Do not over tighten as this could damage or possibly remove the nuts from the alloy infill.
35. Connect and check ECB indicator / park lights and fog lights for correct operation. Fit round surrounds (supplied) into winch access holes in front of channel.
36. Refit under body steel guard using original bolts into ECB steel winch frame at front. **Tighten all bolts.**
37. Install ECB under body guards to top of lower leg of channel section of protection bar with rear flange pointing down. **See figure 24.** Access to inner hole from side of plate, rear hole from behind inner guard and front outer hole through access hole in under body guard. Use two M6 x 25 bolts, one M6 x 25 bolt and washer on 100mm wire, flat washers and nyloc nuts (per side). **See figure 25**
38. Using under body guard as a guide, drill holes in inner guard to 6mm and attach using two M6 x 20 bolts, flat washers and nyloc nuts (per side). Trim inner guards from bottom of channel to vehicles inner guard removing lower section. **See figure 26.**

ENSURE NUMBER PLATE IS CLEARLY VISABLE

Note: When fitting/refitting the licence plate to the vehicle, ensure there is no obstruction to licence plate vision in accordance with local authorities. If required relocate licence plate to an alternate location.



East Coast Bullbars (ECB Pty Ltd)

Tel: 07 3897 5700

Fax: 07 3283 1168

ecb@ecb.com.au www.ecb.com.au

WORLD'S BEST
ALLOY BULLBARS

29 Snook St
Clontarf QLD 4019
Australia

Po Box 122
Margate QLD 4019
Australia

Further VFPS Notes:

- a) Do not attach VFPS to the vehicle using anchorages not intended for this purpose (e.g. engine mounting bolts).
- b) Do not use this product for any vehicle make or model, other than those specified by the VFPS manufacturer.
- c) Do not remove the plaque or label from the VFPS.
- d) Do not modify the structure of the VFPS in any way.
- e) No accessory or fitment should project forward of the VFPS forward profile.
- f) **ENSURE THESE INSTRUCTIONS ARE LEFT WITH VEHICLE OWNER AND/OR OPERATOR.**

IMPORTANT INFORMATION

Periodically check bolts and nuts for correct tightness, especially if travelling on rough roads

FITTING KIT

2 – ECB Steel bar mounting bracket	6 – 3/8 nuts
1 – ECB steel winch frame	8 – M6 x 25 bolts
1 – pair ECB winch frame support brackets	2 – M6 x 25 bolt and washers on 100mm wire
1 – Pair Steel inner guard supports (powdercoated black)	12 – M6 x 20 bolts
1 – Pair steel lower grille mounts	36 – M6 flat washers
1 – Pair Alloy headlight infill's with 430mm of 3mm clip lock trim and M6 nutsert fitted	6 – M6 spring washers
1 – Pair Alloy rear guard infills (powdercoated black)	16 – M6 nyloc nuts
1 – Pair Alloy Under Body Guard marked (F) (P/C BLACK)	
4 – 10 nb steel tube spacers, 48mm long	2 – M6 nuts
18 – ½ x 1 ½ bolts	1 – ECB indicator / park light kit
36 – ½ flat washers	1 – ECB quick click harness kit (IC11RANGLED100H)
18 – ½ spring washers	1 – ECB fog light kit
18 – ½ nuts	1 – ECB quick click fog light harness kit (IC11RAN1004ECBH)
2 – 3/8 x 1 ½ bolts	4 – fog light surrounds
4 – 3/8 x 3 ½ bolts	2 – 380mm Lengths 6mm clip lock trim
12 – 3/8 flat washers	1 – 1200mm Length 6mm clip lock trim
6 – 3/8 spring washers	1 – 650mm length 6mm clip lock trim



Figure 2: Clip on front of grille cover



Figure 3: Clip on underside of grille



East Coast Bullbars (ECB Pty Ltd)

Tel: 07 3897 5700

Fax: 07 3283 1168

ecb@ecb.com.au www.ecb.com.au

WORLD'S BEST
ALLOY BULLBARS

29 Snook St
Clontarf QLD 4019
Australia

Po Box 122
Margate QLD 4019
Australia



Figure 4: Position of clip with grille removed.



Figure 5: Drivers die air dam



Figure 6: Passengers side air dam trim line and Air sensor positioning shown.

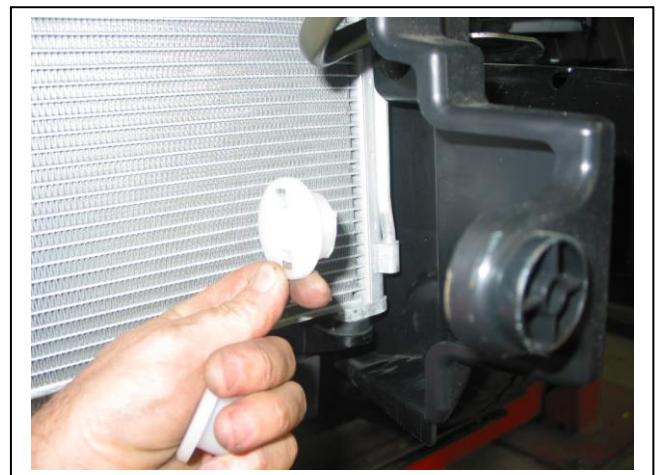


Figure 7: White plastic plug between radiator and chassis rail. Removed for photo.

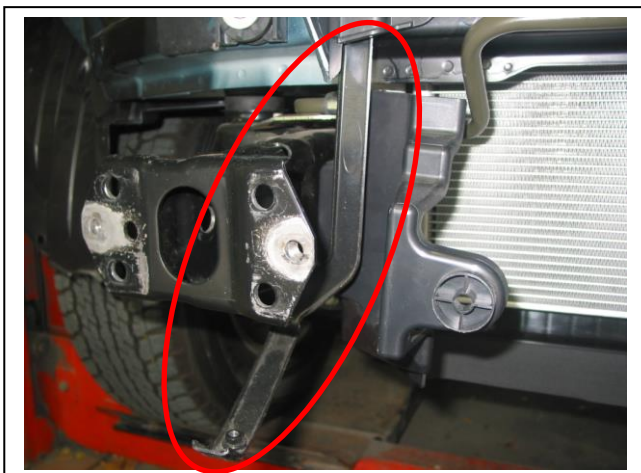


Figure 8: Remove center lower bumper supports



Figure 9: Remove side lower bumper supports. Use removed bolts to fit ECB inner guard supports



East Coast Bullbars (ECB Pty Ltd)

Tel: 07 3897 5700

Fax: 07 3283 1168

ecb@ecb.com.au www.ecb.com.au

29 Snook St
Clontarf QLD 4019
Australia

Po Box 122
Margate QLD 4019
Australia

WORLD'S BEST
ALLOY BULLBARS

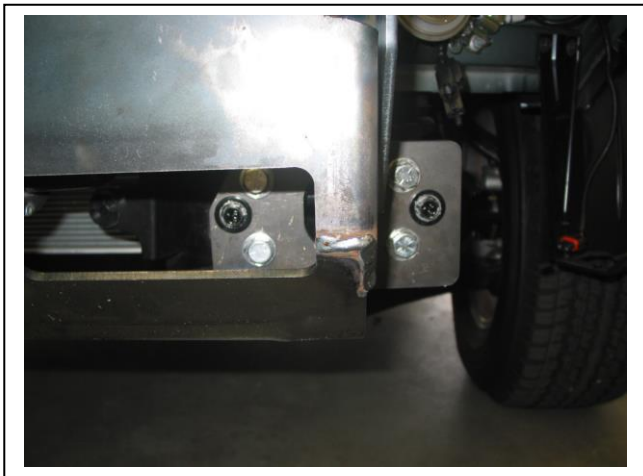


Figure 10: Use original equipment bolts in front of chassis

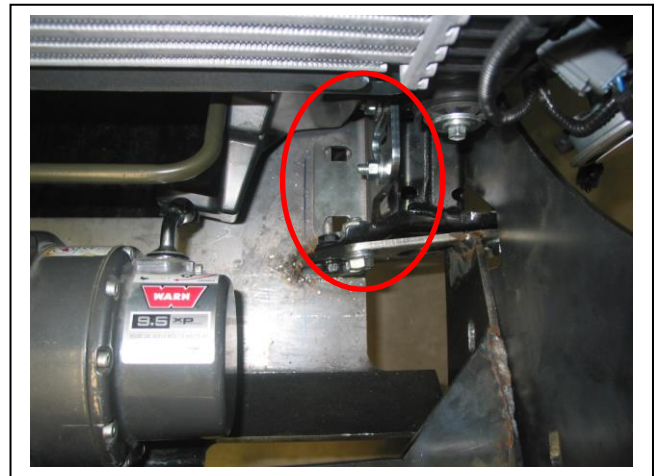


Figure 11: ECB Winch frame support bracket

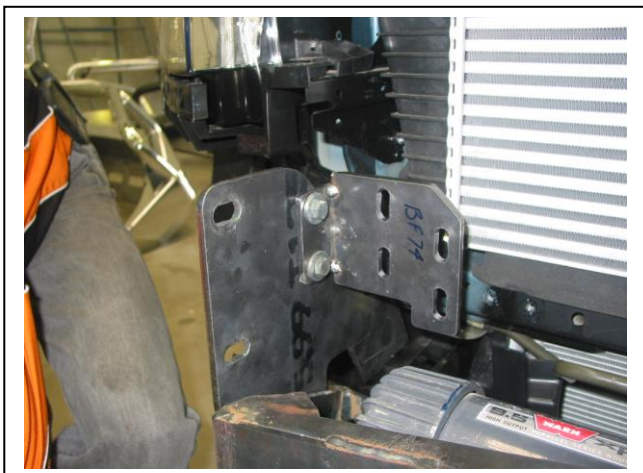


Figure 12: ECB control box mount

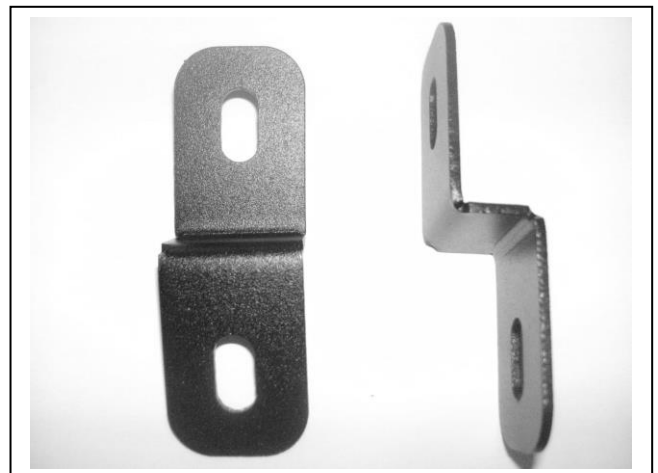


Figure 13: Lower grille mount

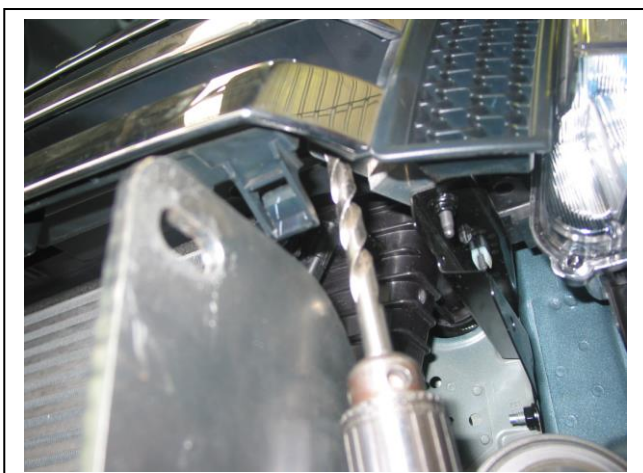


Figure 14: Drilling ECB lower grille mounts

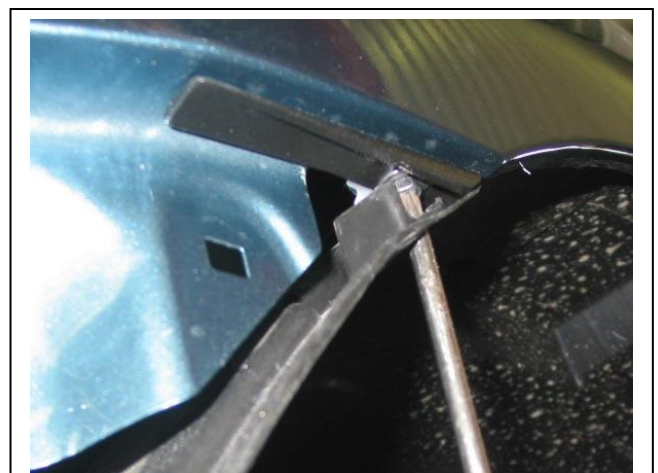


Figure 15: ECB rear guard infill's



East Coast Bullbars (ECB Pty Ltd)

Tel: 07 3897 5700

Fax: 07 3283 1168

ecb@ecb.com.au www.ecb.com.au

WORLD'S BEST
ALLOY BULLBARS

29 Snook St
Clontarf QLD 4019
Australia

Po Box 122
Margate QLD 4019
Australia



Figure 16: Passengers side clip lock trim fitted



Figure 17: Centre clip lock trim fitted

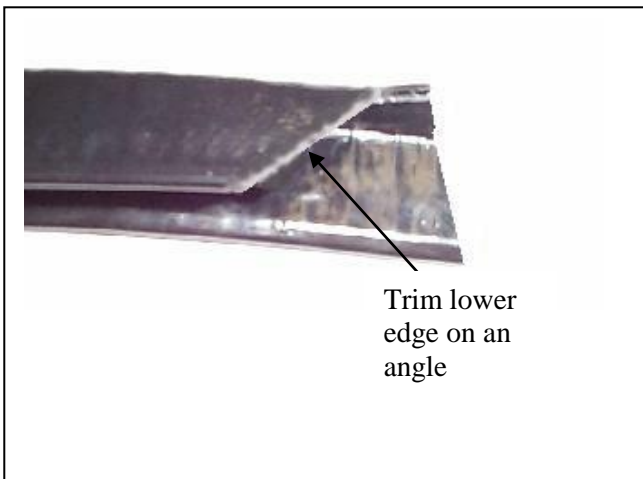
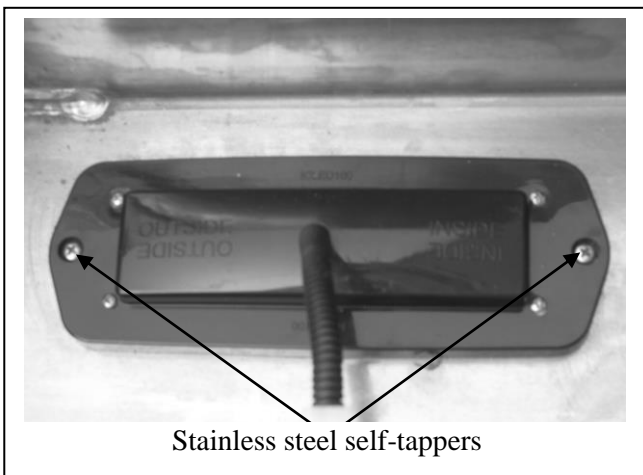


Figure 18

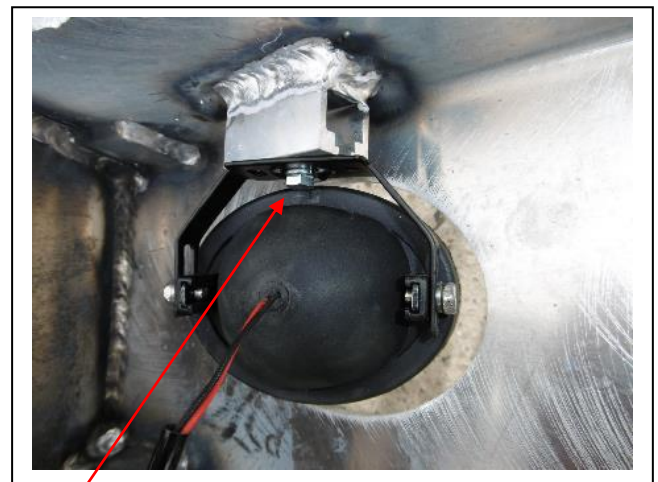


Figure 19



Stainless steel self-tappers

Figure 20



M6 bolt

Figure 21



**WORLD'S BEST
ALLOY BULLBARS**

East Coast Bullbars (ECB Pty Ltd)

Tel: 07 3897 5700

Fax: 07 3283 1168

ecb@ecb.com.au www.ecb.com.au

29 Snook St
Clontarf QLD 4019
Australia

Po Box 122
Margate QLD 4019
Australia



Figure 22: Front view



Figure 23: Side view

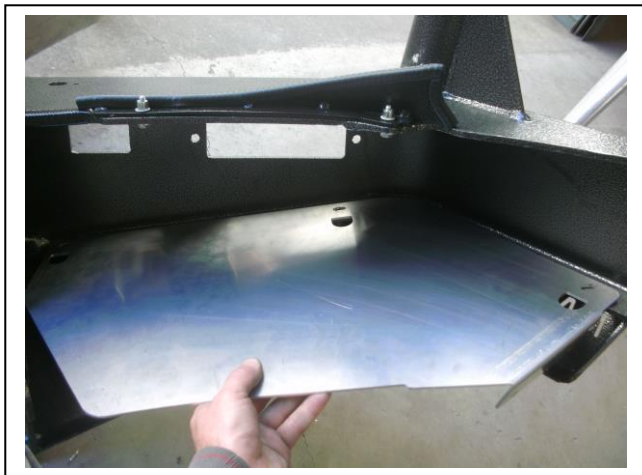


Figure 24: Placement of under body guard.
Bumper removed for photo.



Figure 25: Placing bolt in from side of under body guard.



Figure 26: Cut line for inner guard.



**WORLD'S BEST
ALLOY BULLBARS**

East Coast Bullbars (ECB Pty Ltd)

Tel: 07 3897 5700

Fax: 07 3283 1168

ecb@ecb.com.au www.ecb.com.au

29 Snook St
Clontarf QLD 4019

Australia

Po Box 122
Margate QLD 4019

Australia

We value your comments

Dear Fitter,

ECB would like to know how you went with the installation of this product. We value your comment and may need to contact you to clarify some details so please complete your contact details clearly.

We would appreciate if you could complete as many of the following details as possible.

Your Name:	Your contact No.
Product Part No.	Product Invoice No.
Product Description:	Make, model, and year of vehicle:
Product Work Order No.	Company your from/Company product purchased from:

Date of Fitment: ____/____/____

Was the fitting hardware supplied complete?

Yes

No

If no what was not supplied

Did the installation go well?

Yes

No

Please provide comments

Please draw diagrams if you need to.

Post to

Reply Paid 122

PO Box 122

Margate QLD 4019

Fax to

(07) 3283 1168



**WORLD'S BEST
ALLOY BULLBARS**

East Coast Bullbars (ECB Pty Ltd)

Tel: 07 3897 5700

Fax: 07 3283 1168

ecb@ecb.com.au www.ecb.com.au

29 Snook St
Clontarf QLD 4019
Australia

Po Box 122
Margate QLD 4019
Australia



WORLD'S BEST ALLOY BULLBARS

East Coast Bullbars (ECB Pty Ltd)

Tel: 07 3897 5700

Fax: 07 3283 1168

ecb@ecb.com.au www.ecb.com.au

29 Snook St
Clontarf QLD 4019
Australia

Po Box 122
Margate QLD 4019
Australia

DESPATCH CHECKLIST BF79SY

ICZBKCF75



Work Order #		See other side off this page for photos of all mounts
Finish:		
Transport:		
Due Date:		

- OC.....1 – ECB steel winch frame (P/C BLACK)
- OC.....1 – Pair ECB steel winch frame support brackets (P/C BLACK)
- OC.....1 – ECB control box bracket (P/C BLACK)
- OC.....1 – Pair Alloy Under Body Guard marked (F) (P/C BLACK)
- BK.....1 – Pair steel lower grille mounts (P/C BLACK)
- OC.....1 – Pair Alloy headlight infills with **430mm clip lock trim and M6 nutsert fitted** (P/C black for polished bar, Colour to bar for P/C finishes)
- BK.....1 – Pair alloy rear guard infills (P/C black)
- BK.....1 - Bolt Kit.
- OC.....1 – Pair ECB Overriders – **Fitted to Bar**
- OC.....5 – 6mm Air Scoops – **Fitted to Bar**
- BK.....1 – ECB indicator / park light kit
- BK.....1 – ECB indicator wiring harness kit (IC11RANGLED100H)
- BK.....1 – ECB fog light kit (IC1004ECB)
- BK.....1 – ECB fog light wiring harness (IC11RAN1004ECBH)
- BK.....4 – fog light surrounds
- BK.....2 – 380mm lengths, 6mm clip lock trim
- BK.....1 – 1200mm length, 6mm clip lock trim
- BK.....1 – 650mm length, 6mm clip lock trim
- OC..... Agi-pipe must be put on the end of the bar – see photo for placement**



Is this product “the best it can be” Yes _____/_____
 Wrapper’s initials / Checker initials
 If NO fix before continuing

All parts checked and completed by:

Nut and bolts: _____ Date __/__/__

Order control: _____ Date __/__/__

Final wrap check: _____ Date __/__/__



East Coast Bullbars (ECB Pty Ltd)

Tel: 07 3897 5700

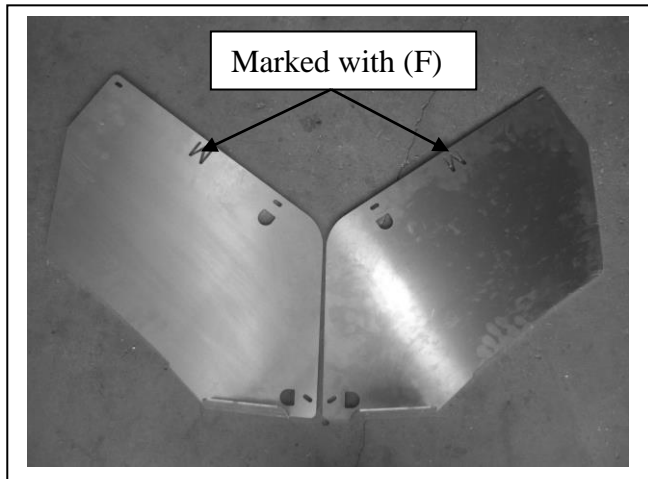
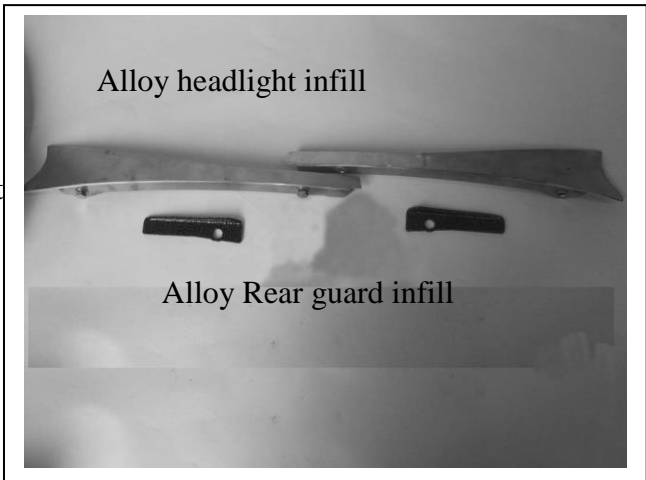
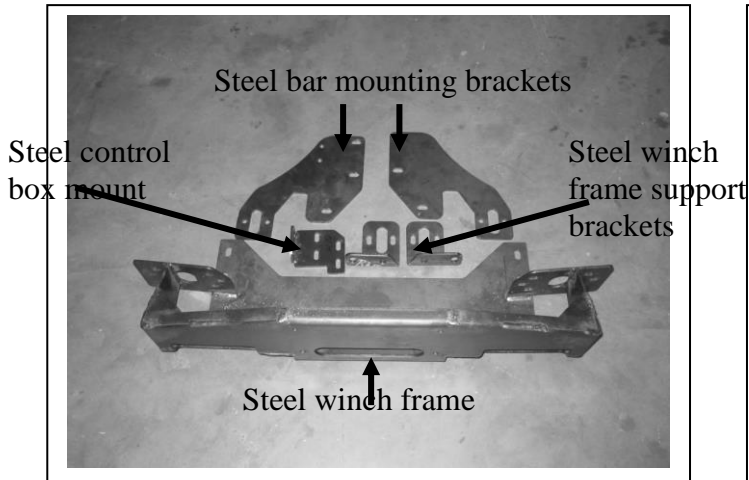
Fax: 07 3283 1168

ecb@ecb.com.au www.ecb.com.au

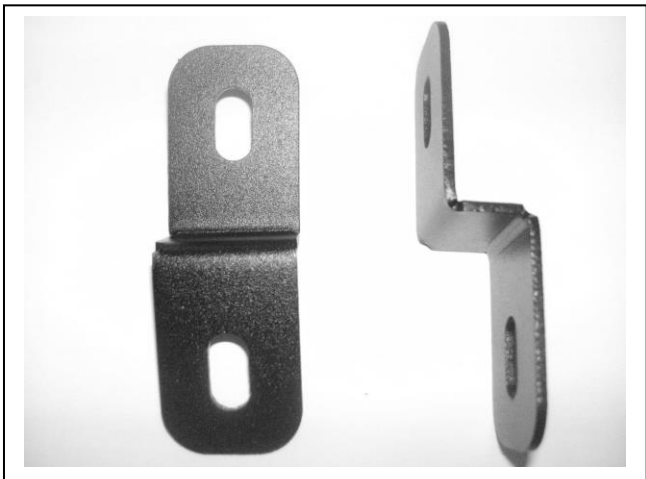
WORLD'S BEST
ALLOY BULLBARS

29 Snook St
Clontarf QLD 4019
Australia

Po Box 122
Margate QLD 4019
Australia



Alloy Under Body Guards (F)



Grille mounts



Ensure wing is wrapped with Agi-Pipe